

Al Fresco featuring sunnyside

50"x76" napping quilt

MATERIALS

¼ yard cut (or fat quarter) each of 14 Sunnyside prints:
13535-23, 13535-60, 13535-84, 13536-24, 13536-53,
13536-88, 13537-83, 13537-87, 13539-22, 13539-42,
13539-58, 13541-26, 13541-41, 13541-62

1½ yards dark blue field fabric 13538-52

¾ yard binding fabric 13537-89

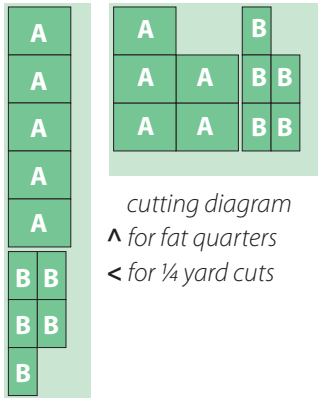
3 yards backing fabric 13540-56

54"x80" batting

Yardages are based on 42" usable width of fabric. Cutting sizes include ¼" seam allowances. We recommend prewashing.

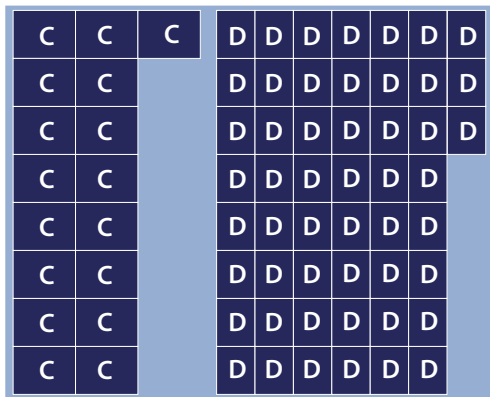
CUTTING

- From the 14—¼ yard cuts or fat quarters, cut a total of:
68—6½"x5" **A** pieces
68—3"x5" **B** pieces

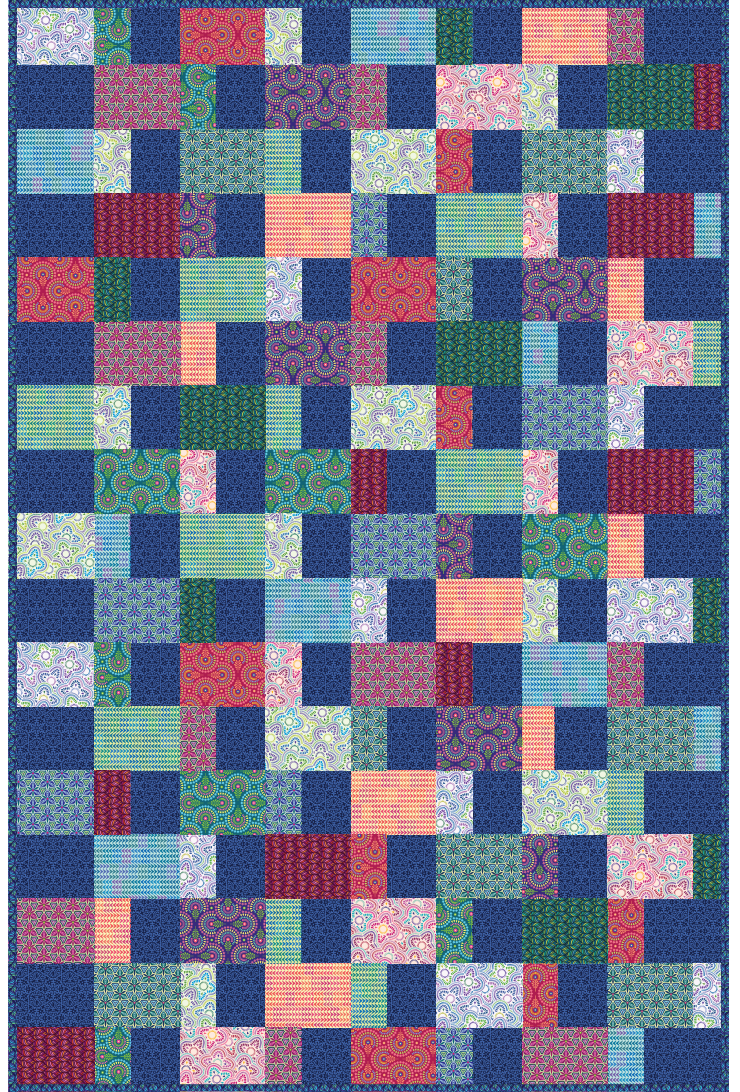


cutting diagram
△ for fat quarters
< for ¼ yard cuts

- From dark blue field fabric, cut:
17—6½"x5" **C** pieces
51—4"x5" **D** pieces




cutting diagram



Al Fresco featuring sunnyside

50"x76" napping quilt

ASSEMBLY

1. Sew 68 **AB** blocks, pairing contrasting fabrics.
 *see tips
2. Lay out and sew rows as shown in assembly diagram.
3. Sew rows together, pinning at seams to align.

FINISHING

1. Layer pieced top, batting and backing.
2. Baste, then quilt.
3. Finish with your preferred binding method. Visit the Modern Quilt Studio YouTube channel to learn our quick and easy one-step binding method.

TIPS

- Pair fabrics of different colors and values when sewing **AB** blocks.
- Instead of sewing all 68 **AB** blocks at once, consider sewing the majority, then custom pairing the remaining ones after doing a preliminary layout. This will make it easier to avoid awkward adjacencies.
- We recommend pressing all seams open for a flat, graphic look.
- Aim for an even distribution of colors when laying out the **AB** blocks.

